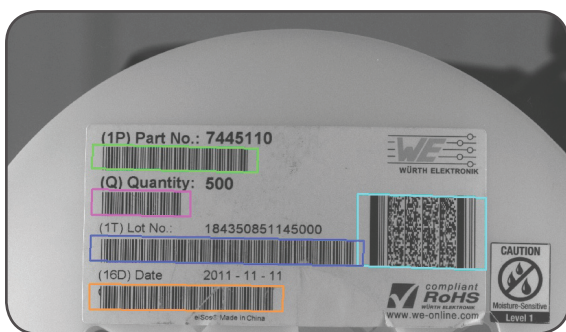


## Goods receipt scanner

Traceability up to component level is a must-have in today's electronic production. But as there is no uniform labeling standard concerning manufacturer information on component rolls, many companies in the electronic production need a flexible system to relabel barcodes on component rolls, drypacks and cardboard boxes. SmartRep offers such a system for complete traceability: the goods receipt scanner by Modi.

### Highlights

- Two camera system for speed and highest accuracy in reading
- Cycle time per role: 1-2 secs.
- Detailed picture of the manufacturer information is saved in a central database in small memory size for traceability reasons
- Complete traceability with a unique ID: You can generate the unique ID yourself or integrate one from your ERP-System
- Eliminates all relabeling faults, because data is automatically recorded by pattern matching
- Readback function to check if the right label is on the right role
- A touchscreen and a table that is steplessly variable in height take care of ergonomic operating
- Robust and high-quality system



### Contact:

SmartRep GmbH  
Martin-Luther-King-Straße 2b  
63452 Hanau

Phone: +49 (0) 6181 44087-50  
E-Mail: [info@smartrep.de](mailto:info@smartrep.de)  
Web: [www.smartrep.de](http://www.smartrep.de)

